

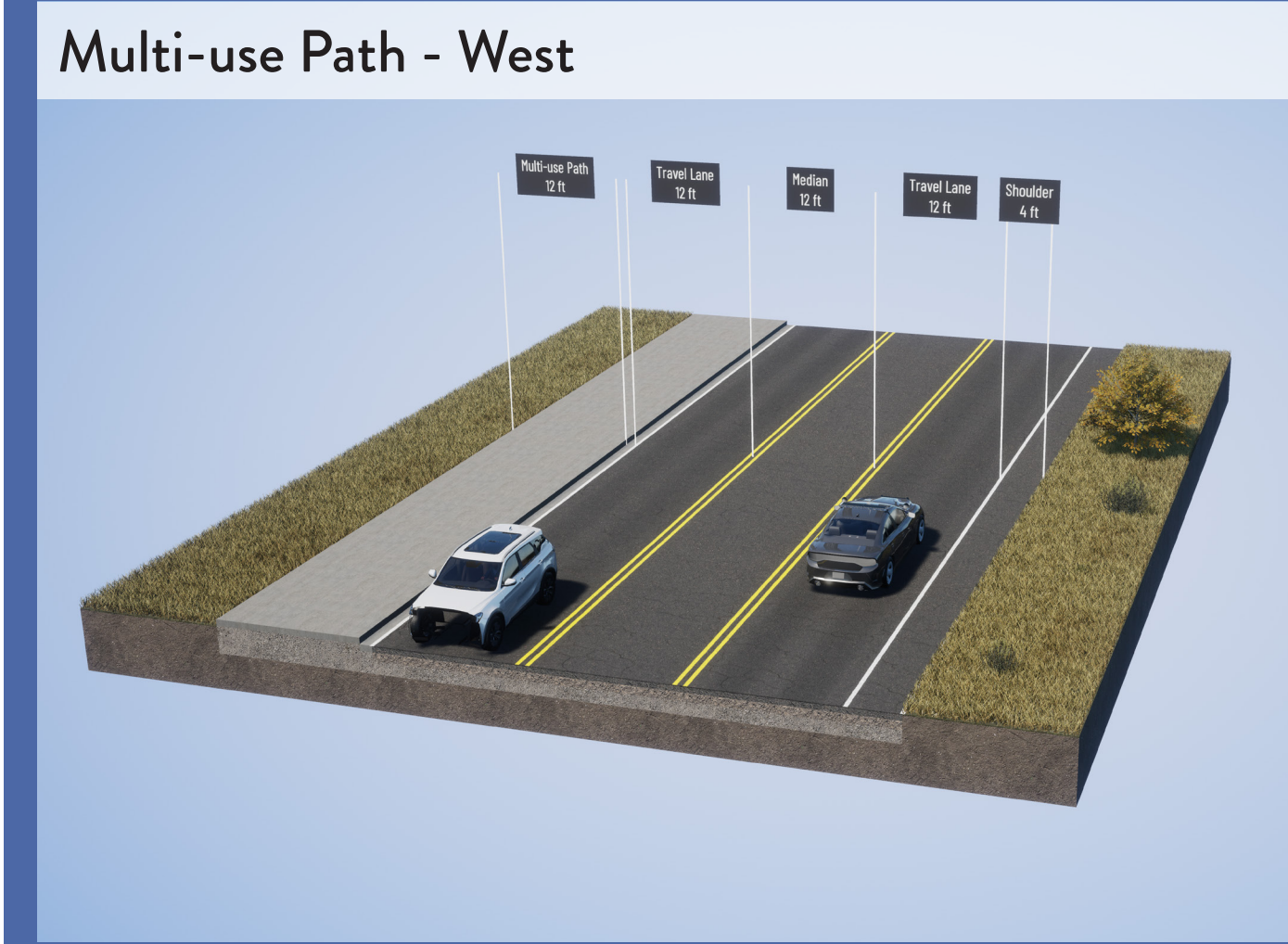
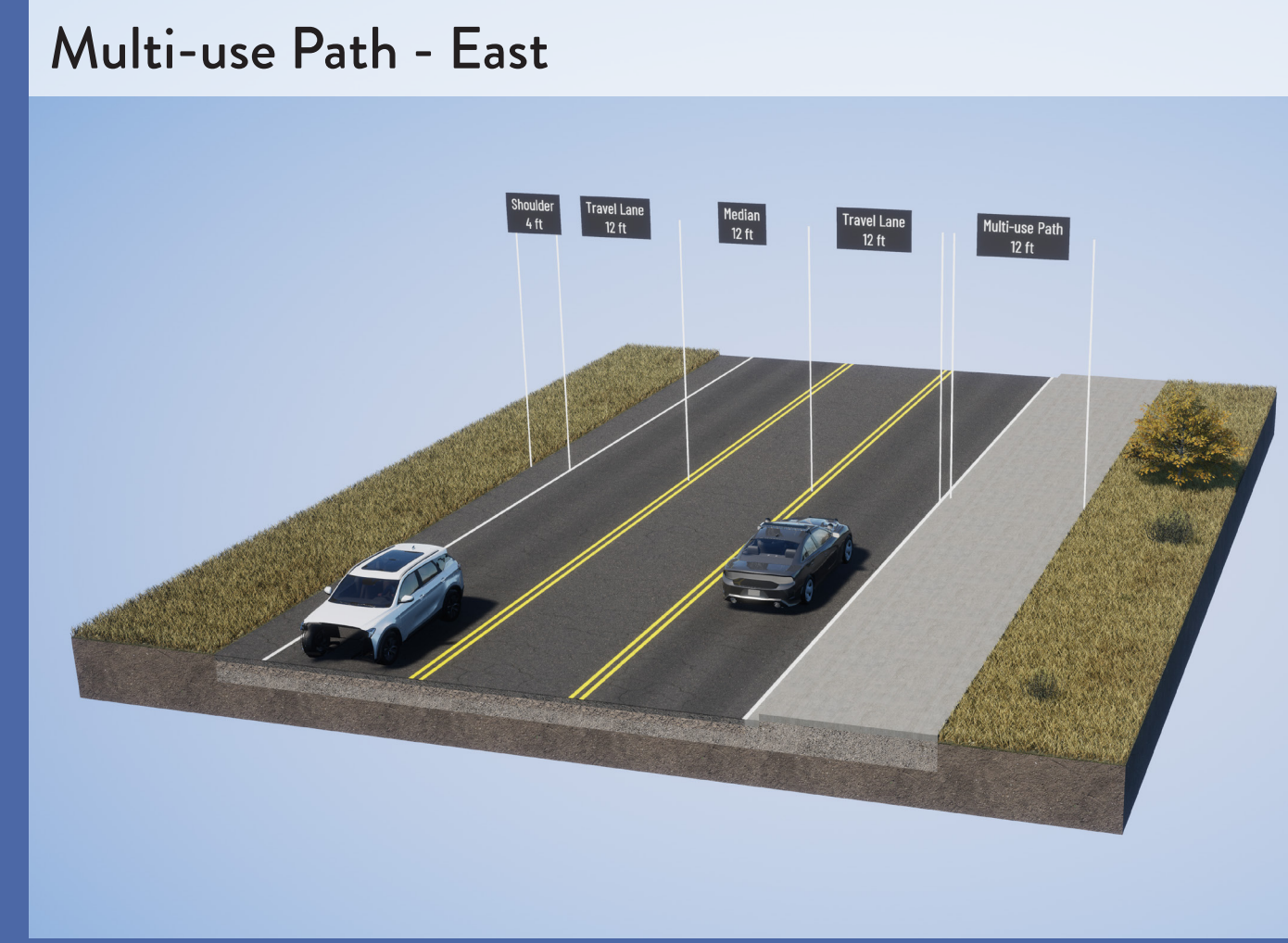
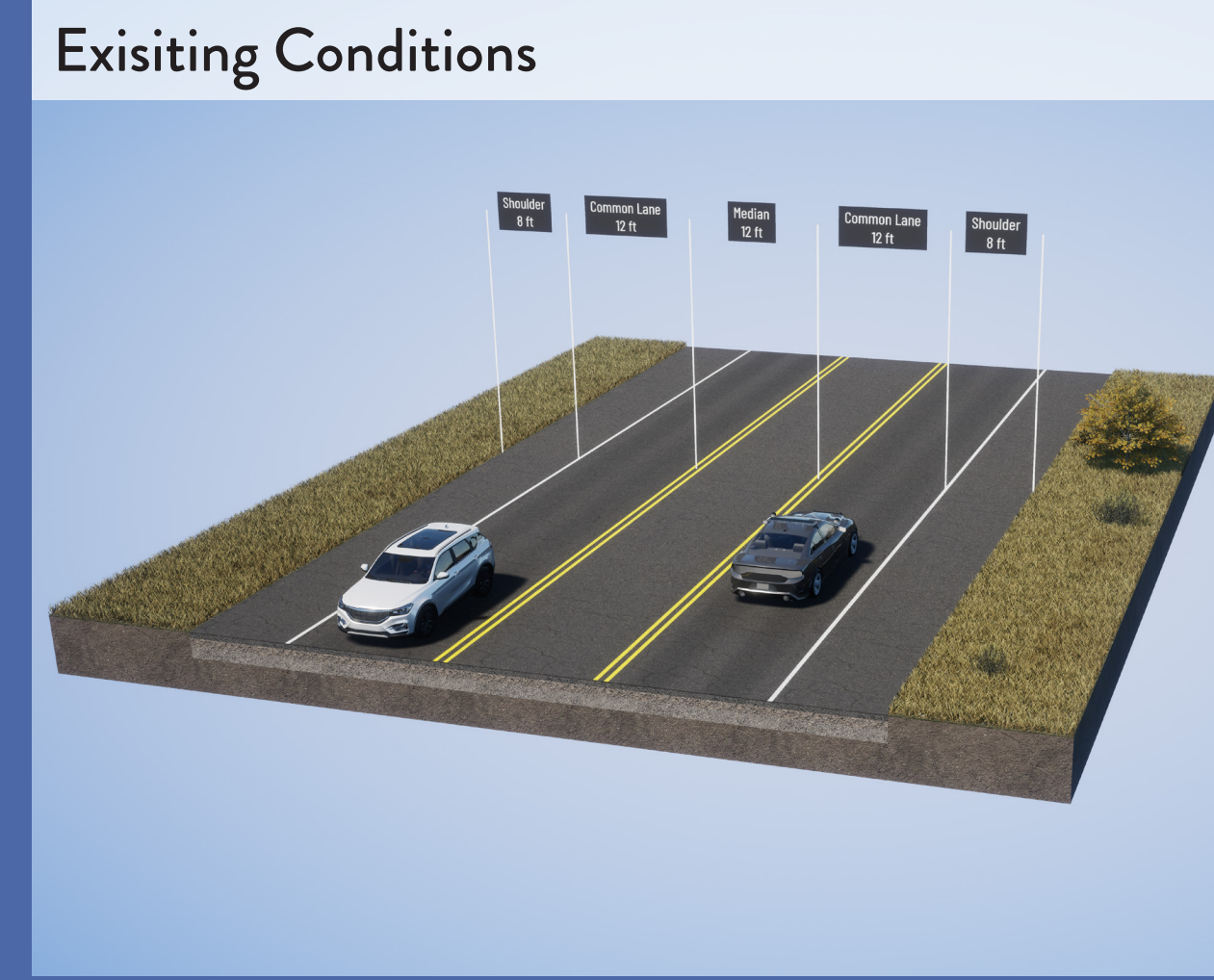


EXAMPLE IMAGES





EXAMPLE IMAGES





INTERSECTION TREATMENTS FOR PHASE II

INTERSECTION #1

Shaws Flat Rd, SR49, School St, and Columbia Way

Existing Conditions



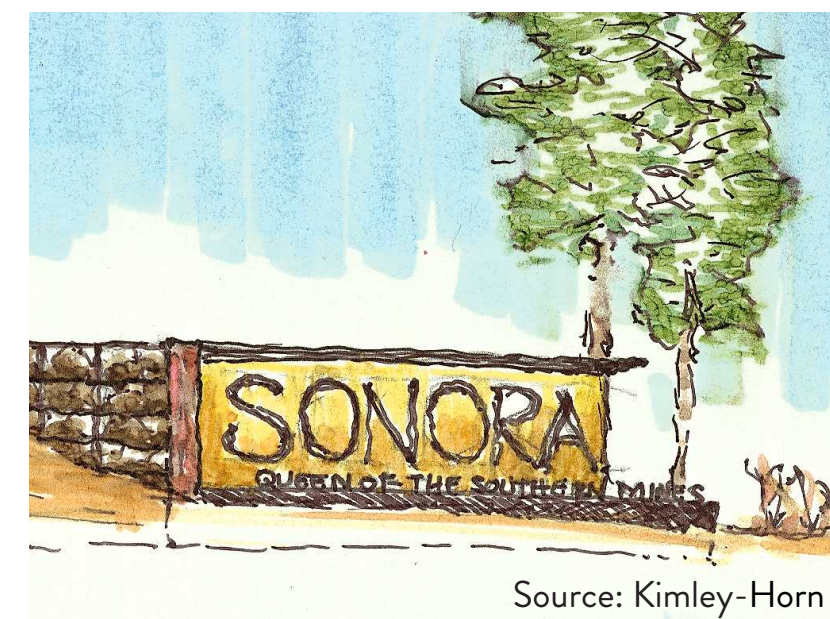
Proposed Treatment: Roundabout

As part of the Sonora ISOAP Stage 1 study, an analysis of different intersection control alternatives at the site was conducted. The study took into account Intersection Turning Movement Volumes and Annual Daily Traffic (ADT), during AM, PM, and school peak hours along SR49 corridor to determine vehicle, pedestrian, and bicycle volumes, and the location of congestion and queues within the study area.

The 5-Legged Roundabout is the preferred alternative as shown below.



Preferred Alternative: 5-Legged Roundabout



Gateway Monument Signage



Alternative 3: Signal

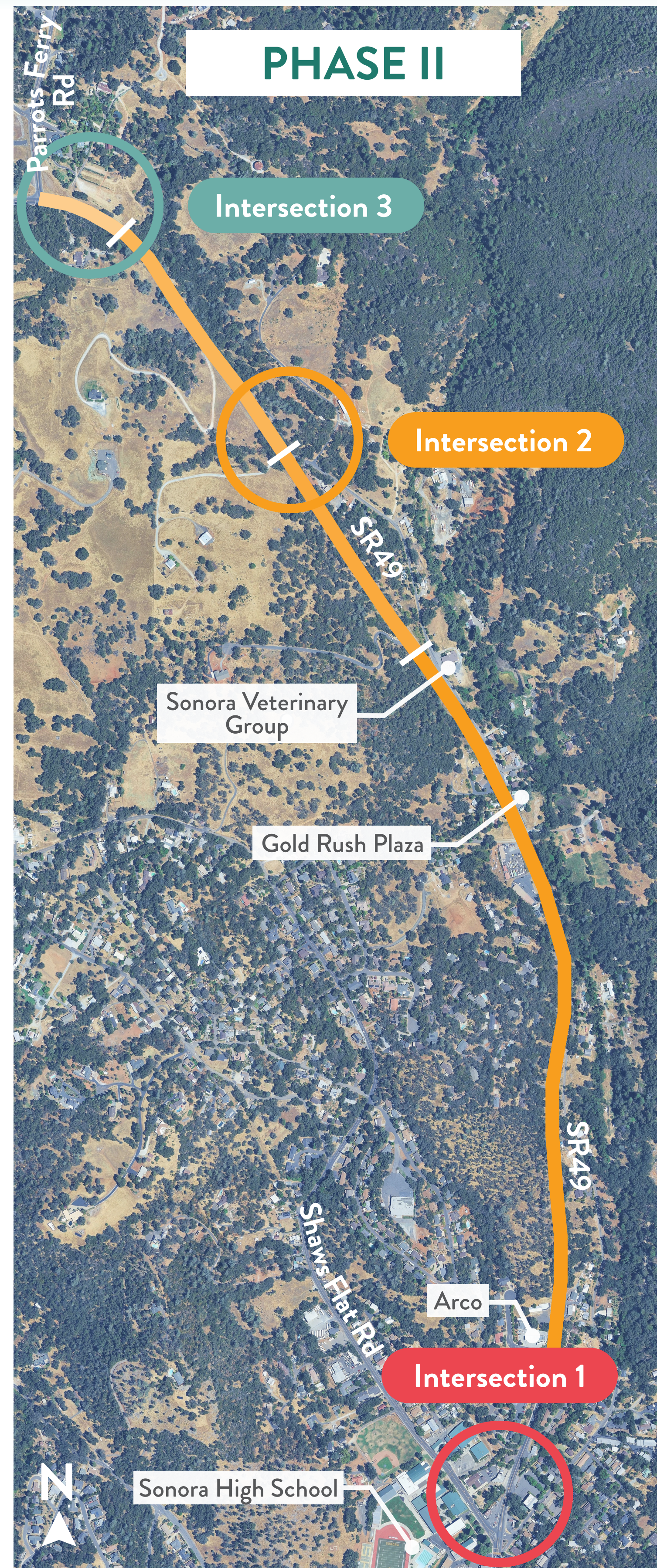
Like:



Dislike:



PHASE II



INTERSECTION #2

SR49 and Columbia Way

Proposed Treatment: HAWK (high intensity activated xwalk)

A HAWK crossing is recommended at this intersection to allow for bicyclists and pedestrians to cross SR49 safely. Pedestrian and bicyclist visibility is particularly important if the tiered deck alignment switches from the west of SR49 to the east, and vice versa.

Like:



Dislike:



Existing Conditions



HAWK Crossing



INTERSECTION #3

Parrots Ferry Rd and SR49

Proposed Treatment: Protected Bicycle Intersection

A protected bicycle intersection at this location would create a safe transition between the proposed multiuse paths on SR49 and Parrots Ferry Rd for bicyclists. The intersection would include a bicycle signal, a dedicated bicycle path through the intersection, and corner islands.

Like:



Dislike:



Existing Conditions



Protected Bicycle Intersection





INTERSECTION TREATMENTS FOR PHASE III

INTERSECTION #4

Parrotts Ferry Rd and Sawmill Flat Rd

Proposed Treatment: Protected Bicycle Intersection

A protected bicycle intersection at this location would create a safe environment for bicyclist to cross Sawmill Flat Rd on the eastern side of Parrotts Ferry Rd. This treatment would require converting the intersection into a signalized intersection and installing a dedicated bicyclce path through the intersection.

Like:



Dislike:

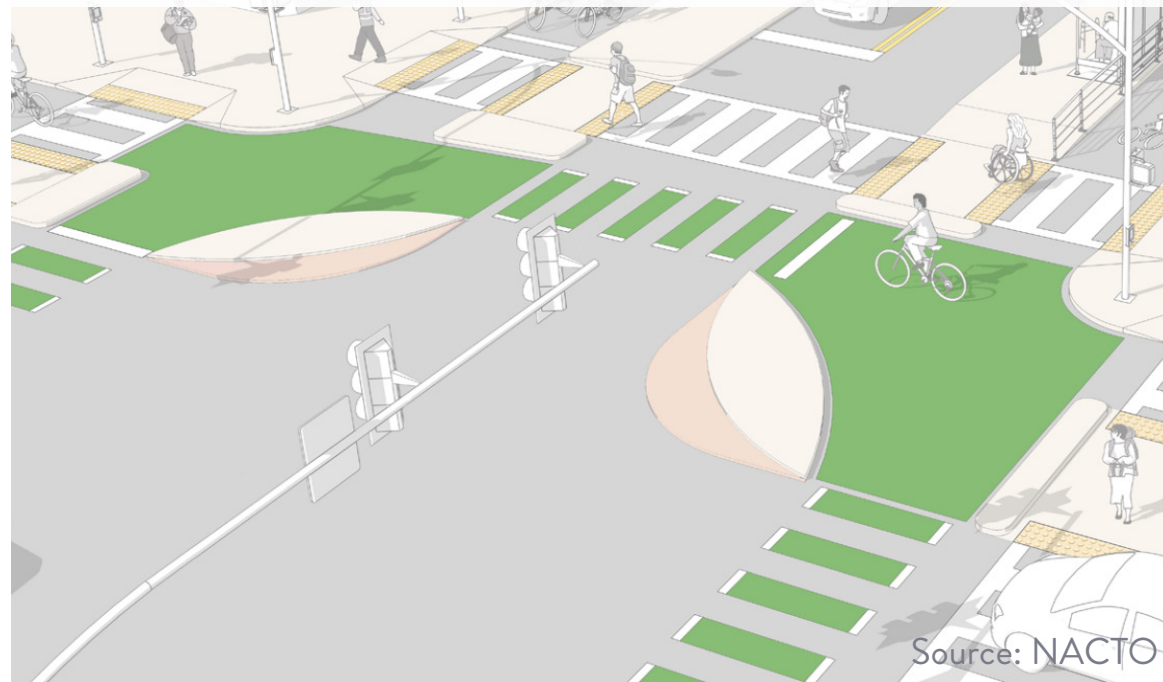


Existing Conditions



Source: Nearmap

Protected Bicycle Intersection



Source: NACTO

INTERSECTION #5

Parrotts Ferry Rd, Airport Rd, and Howsner Ln

Proposed Treatment: Mini Roundabout

A mini roundabout at this three-point intersection would increase safety by slowing down speeds and increasing visibility for all road users through the intersection.

Like:



Dislike:



Existing Conditions



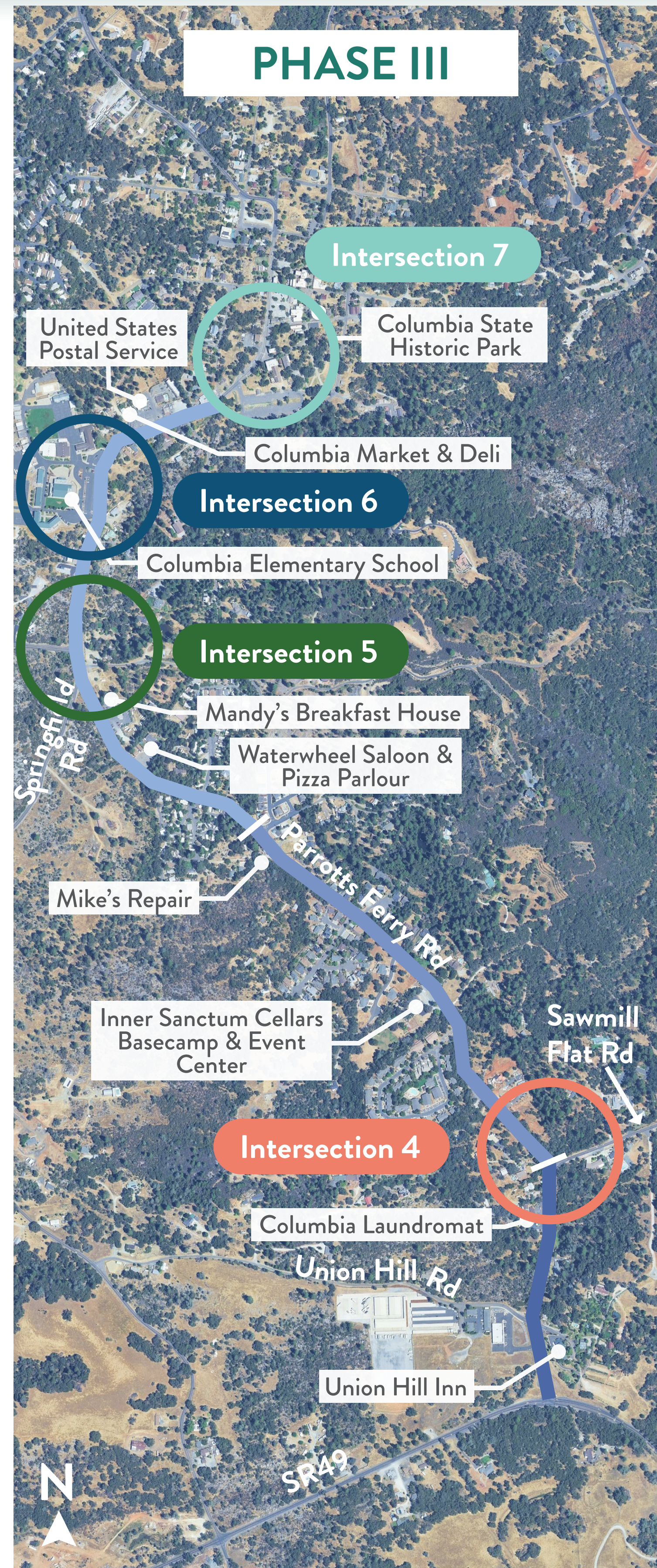
Source: Nearmap

Mini Roundabout



Source: Mass.gov

PHASE III



INTERSECTION #6

Parrotts Ferry Rd, Columbia Elementary School, and Dondero Trail

Proposed Treatment: HAWK (high intensity activated xwalk)

This treatment calls for converting the existng intersection into a HAWK crossing to provide enhanced safety near Columbia Elementary School for pedestrians, children, and bicyclists.

Like:



Dislike:



Existing Conditions



Source: Nearmaps

HAWK Crossing



Source: Car Center Mary Transportation

INTERSECTION #7

Parrotts Ferry Rd, Columbia St, and S Gold St

Proposed Treatment: Mini Roundabout

A mini roundabout at this intersection would help control the flow of vehicles, bicycles, and pedestrians in and out of Columbia State Historic Park.

Like:



Dislike:



Existing Conditions



Source: Google Earth Pro

Mini Roundabout



Source: StreetsBlogLA



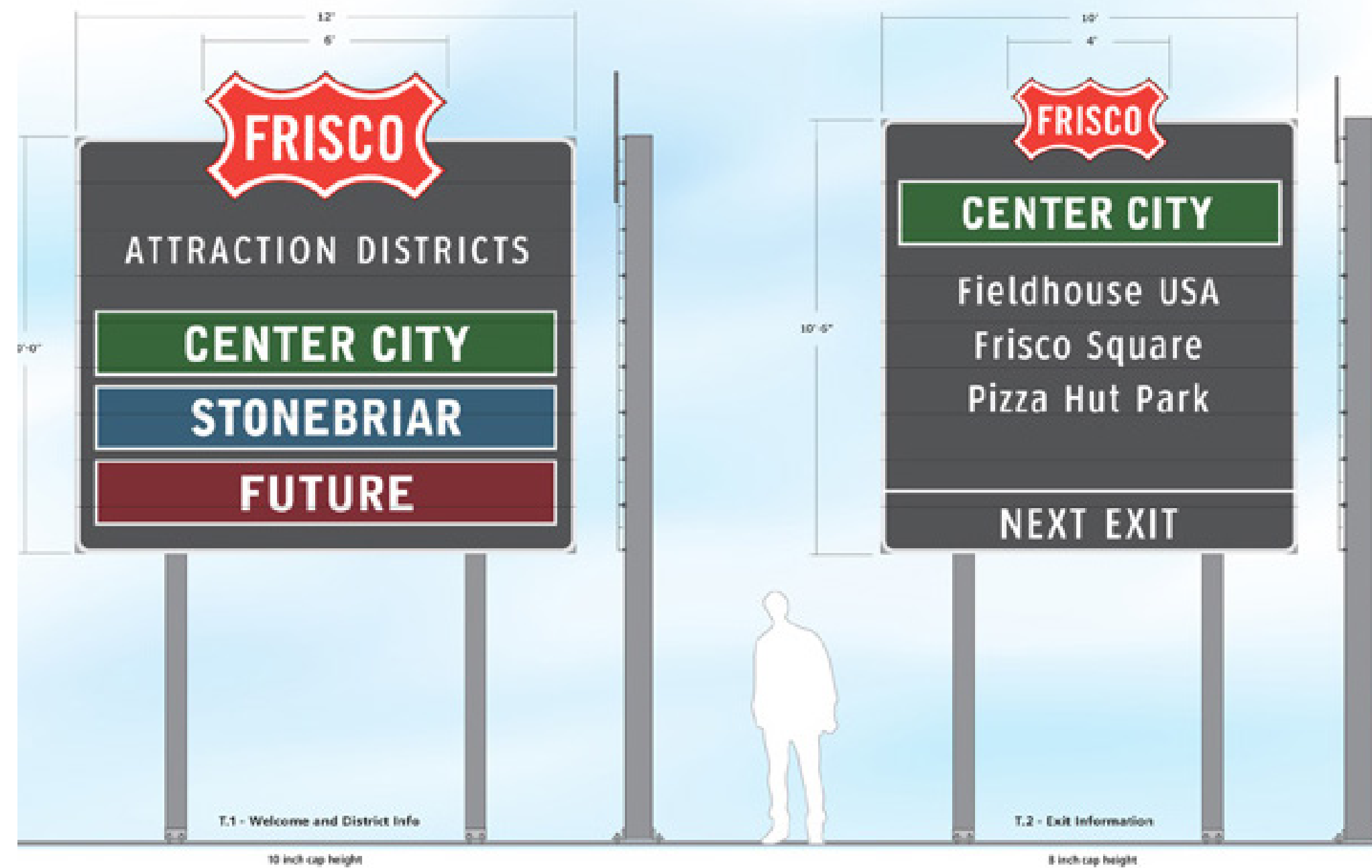
DESIGN PRINCIPLES

LEGIBLE

Develop a corridor-wide language of common design elements that make the Gold Rush Path legible across all phases and segments of the corridor.

AREAS OF FOCUS

- Street furniture: benches, lighting, planters, etc.
- Paving materials
- Plant palette
- Landscape features
- Wayfinding signage
- Retaining walls and structures



LOCAL

Identify and interpret local placemaking opportunities that honor and celebrate the historic & cultural heritage and unique attributes of specific locations along the Gold Rush Path.

AREAS OF FOCUS

- Sonora High School
- Parrotts Ferry/SR-49 intersection
- Columbia State Historic Park
- Cultural heritage and historic events
- Environmental education



SAFE

Design path improvements to maximize access and improve safety conditions for a wide variety of vulnerable end users who use the corridor for daily needs.

AREAS OF FOCUS

- Primary and secondary students
- Columbia College students
- Seniors
- Residents with limited access to cars
- Enhanced crossings
- Improved visibility of pedestrians and cyclists

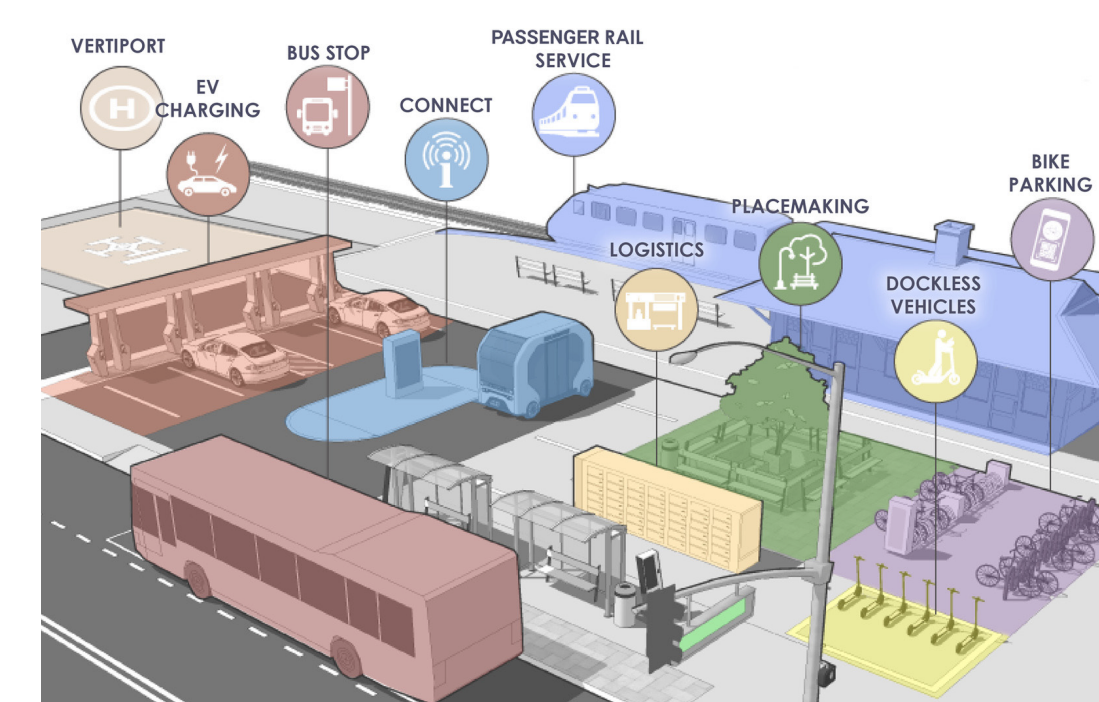


MULTIMODAL

Enhance multimodal connections through a variety of amenities and leverage commuter and recreational corridors.

AREAS OF FOCUS

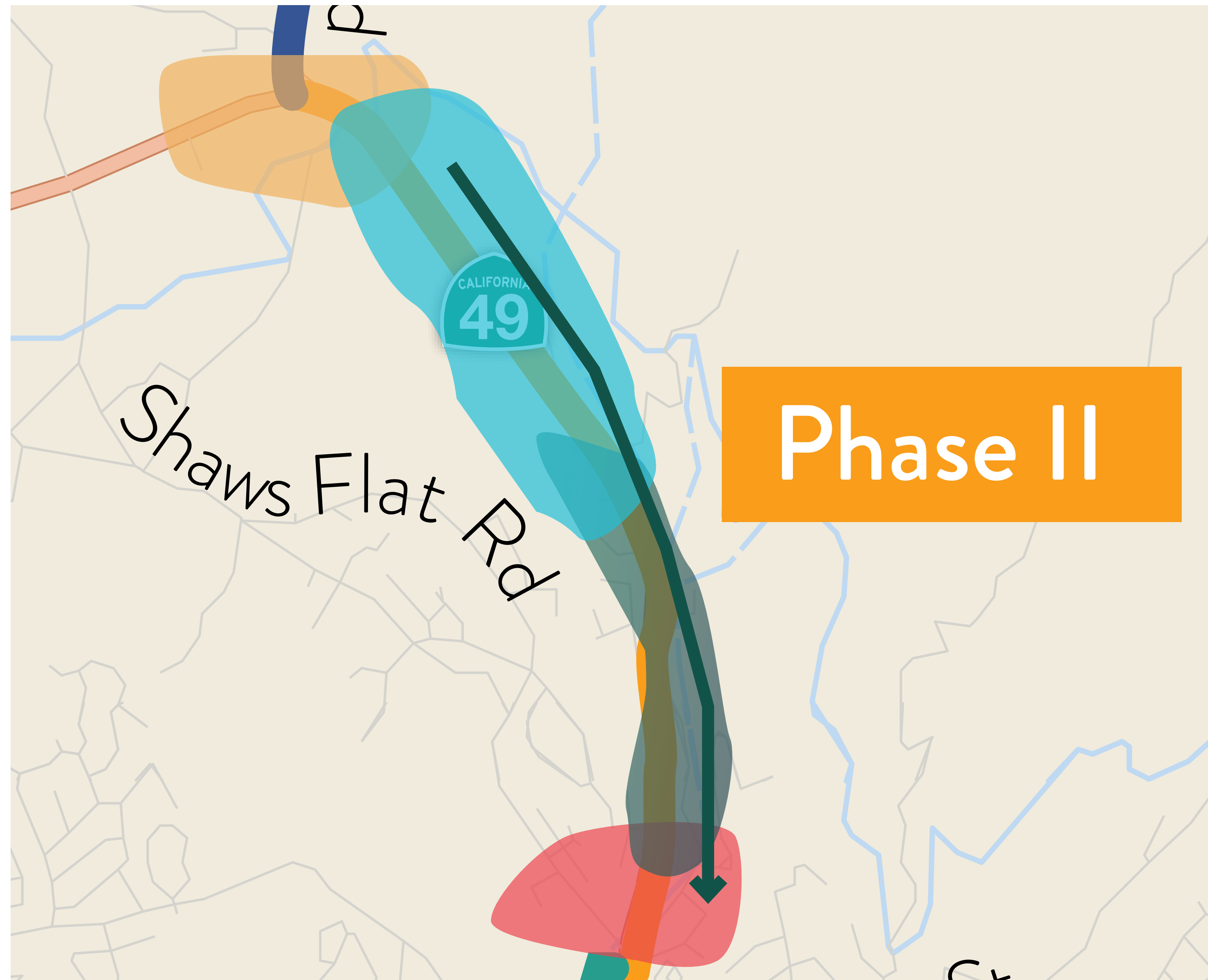
- Cultural tourism - Airport and Columbia State Historic Park
- Recreational tourism
- Daily commuters
- Small and medium scale mobility hubs
- Enhance existing/proposed first-last mile connections





KEY THEMES

PHASE II



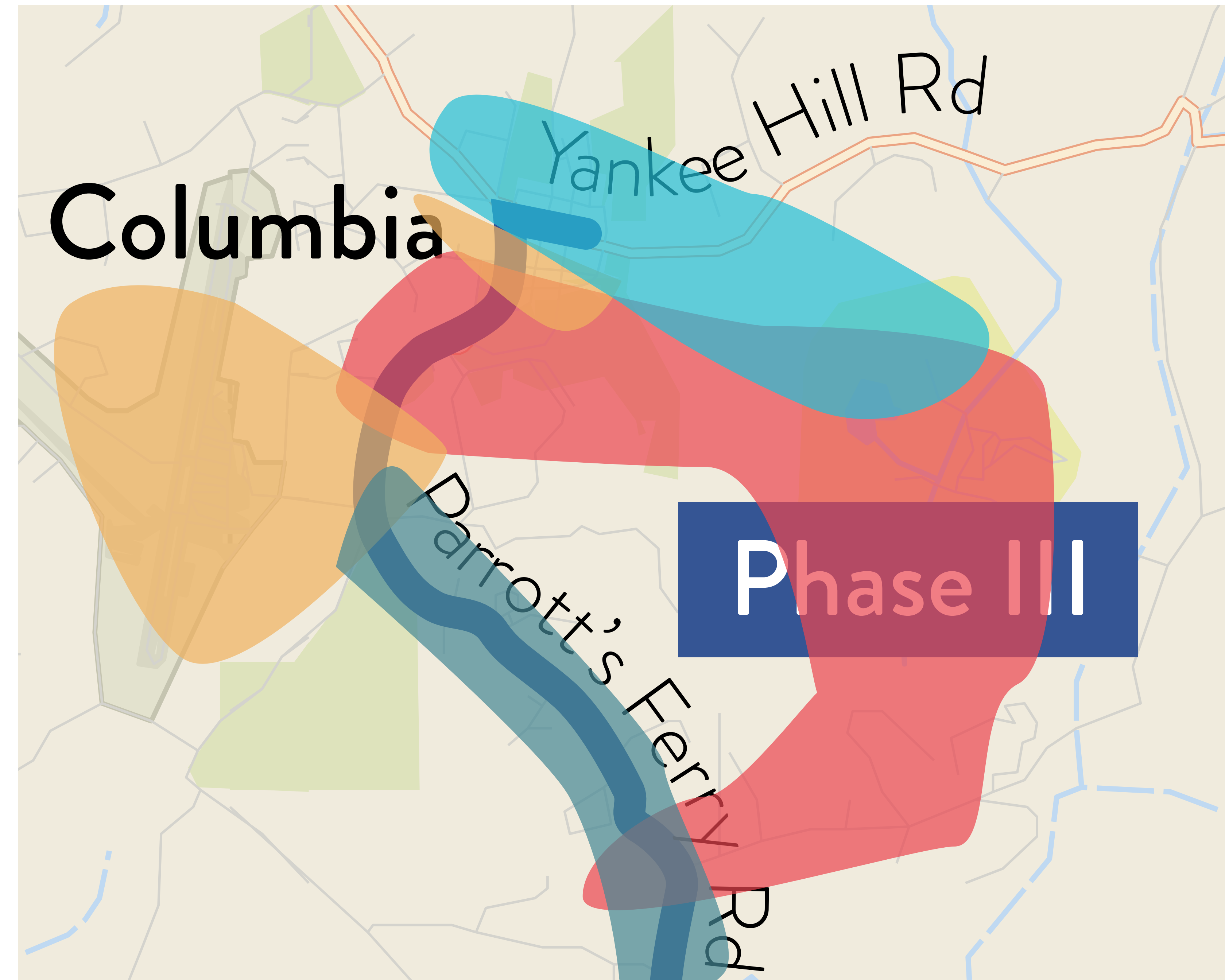
- TRANSPORTATION: then + now**
- Parrotts Ferry
 - Sierra Rail
 - Small-scale mobility hub for GRP
 - Interpretive area

- LANDSCAPE**
- Pre-settlement oak savanna landscape
 - Post-1849 boulder landscape

- MINING**
- “The Sluice”
 - Address south-bound drainage and ponding

- EDUCATION + MOBILITY**
- Sonora HS placemaking opportunities
 - Sonora HS safety + mobility

PHASE III



- MOBILITY**
- Columbia SHP mobility hub
 - Connections to Airport & Dondero Trail

- LANDSCAPE**
- Gateway to SHP
 - Future trail connections to bouldering area, Columbia College trails

- STORIES OF TUOLUMNE COUNTY**
- Cultural corridor, interpretive area

- EDUCATION + VILLAGE CENTER**
- Columbia Village
 - Columbia Elementary
 - Columbia College



GOALS AND OPPORTUNITIES

GOAL 1

CELEBRATE TUOLUMNE COUNTY'S UNIQUE LANDSCAPE AND NATURAL HISTORY

OPPORTUNITY #1

Feature the region's pre-European settlement, native oak savanna landscape.

The foothill oak savanna landscape is defined by the California black oak (*Quercus kelloggii*), a keystone species that features prominently within the rolling foothill landscape. California live oak (*Quercus agrifolia*) and valley oak (*Quercus lobata*) can be considered to promote resilience and species diversity. The trees are sparsely placed, occupying no more than 10%-40% of groundcover. Native grasses include blue wild rye (*Elymus glaucus*) and purple needlegrass (*Stipa pulchra*).

Milled Black Oak Wood - Material Accents



Black Oak Leaf & Acorn



Bedrock Geology: Limestone and Dolomite



Blue Wild Rye



Rolling Foothill Oak Savanna Landscape



OPPORTUNITY #2

Highlight post-1848 landscape interventions and mining activity.

The first mining camp was created in 1840 by settlers from Sonora, Mexico, near what is now Sonora High School/Shaws Flat Ditch. Placer mining was common, which involved separating gold from larger particles by washing water through sluice boxes and gold panning. This process left an indelible mark on the Tuolumne County landscape. The Gold Rush path is lined with rocks and boulders of all sizes that were excavated during the mining process, particularly near Columbia State Historic Park and along Phase 2 of the Gold Rush Path. Non-native vegetation like the Ponderosa Pine was introduced with these settlers.

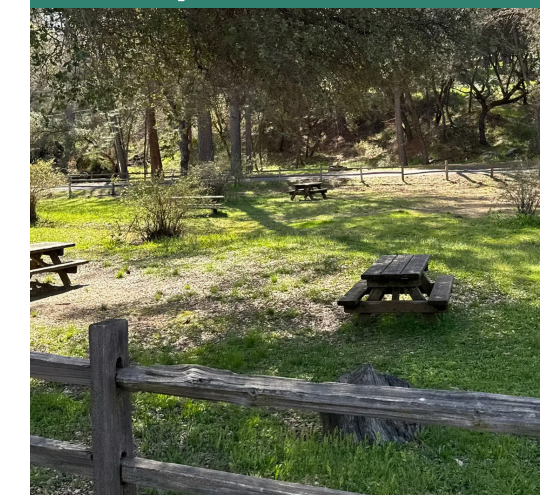
Ponderosa Pine: Non-native Iconic Tree Species



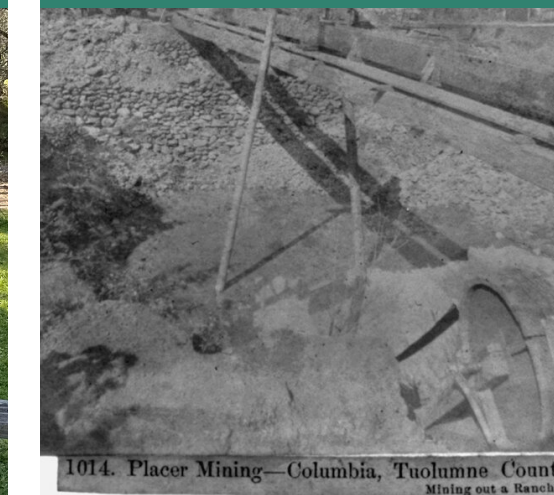
Coffill Park: Daylight Streams and Ditches, Passive Rec. Oppty.



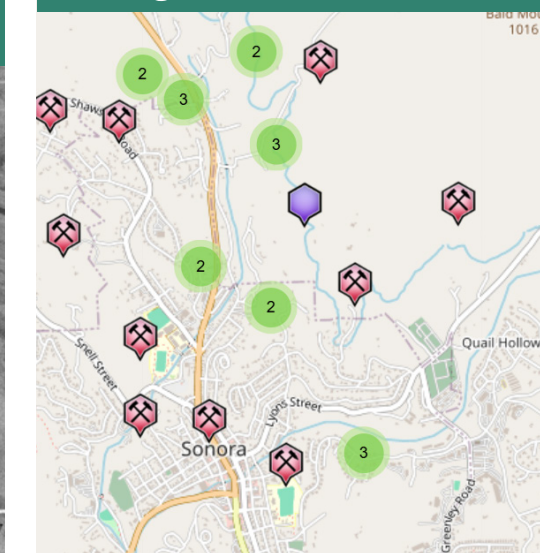
Boulders as Prominent Remnant of Mining History



Placer Mining in Tuolumne County, 1866



Placer Mining Activity Along Phase 2



Incorporate Elements of Placer Mining Into Drainage Control



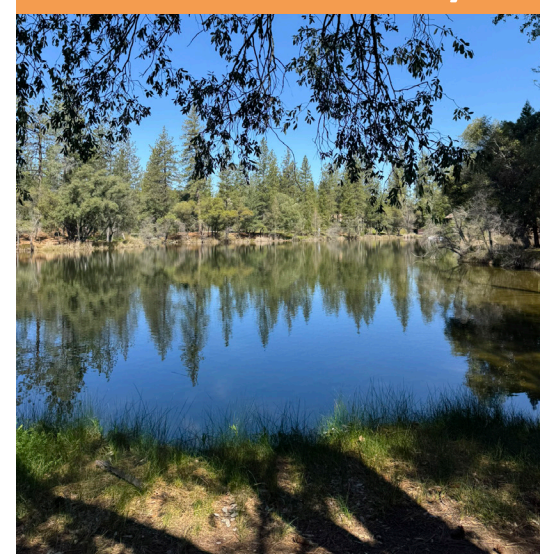
GOAL 2

CONNECT THE COMMUNITIES OF TUOLUMNE COUNTY AND ENHANCE MOBILITY THROUGH SAFETY AND COMPLETE STREET IMPROVEMENTS

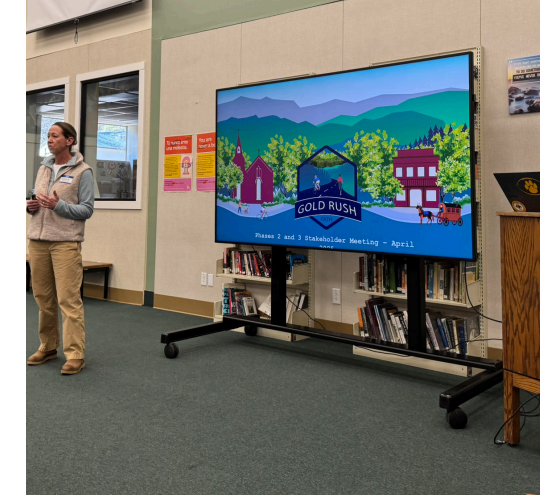
OPPORTUNITY #3

Provide access to the corridor's major institutions, transportation corridors, and end users.

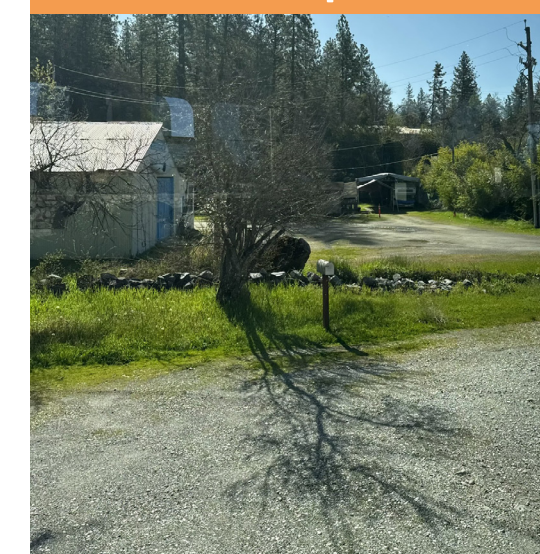
Columbia College Students and Faculty



Sonora High School & Columbia Elementary School



Dondero Trail and Columbia Airport



Residential Communities, HOAs, Visitors



Mobility Hubs @ Sonora HS & Columbia State Historic Park



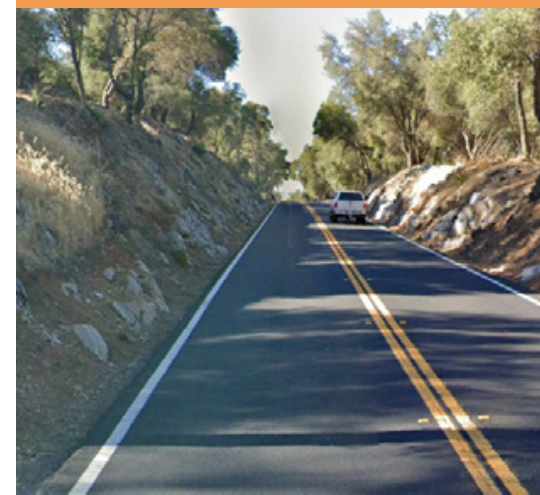
Columbia State Historic Park Visitors and Recreational Tourism



OPPORTUNITY #4

Improve safety conditions for residents and visitors along the Gold Rush Path.

Constrained ROW: Limited Ped. and Cyclist Facilities



Roundabout at Shaws Flat/SR-49/ Columbia Way



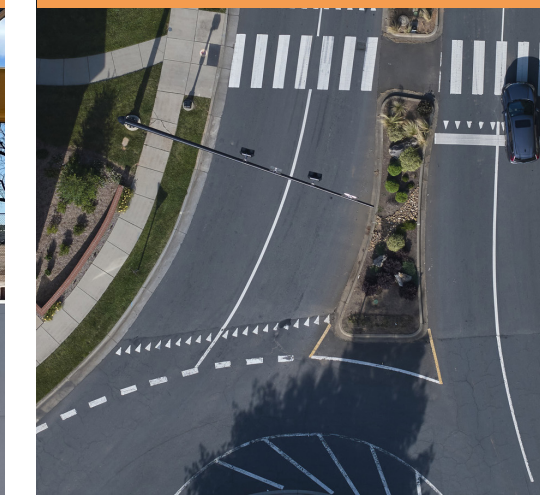
Guardrails and Fencing to Promote Safety and Placemaking



Mid-corridor Crossings: Pedestrian Hybrid Beacons



Roundabout @South End of State Historic Park



Protected Bicycle Intersection @ SR-49 and Parrotts Ferry Rd



GOAL 3

CELEBRATE TUOLUMNE COUNTY'S CULTURAL HERITAGE AND MINING HISTORY

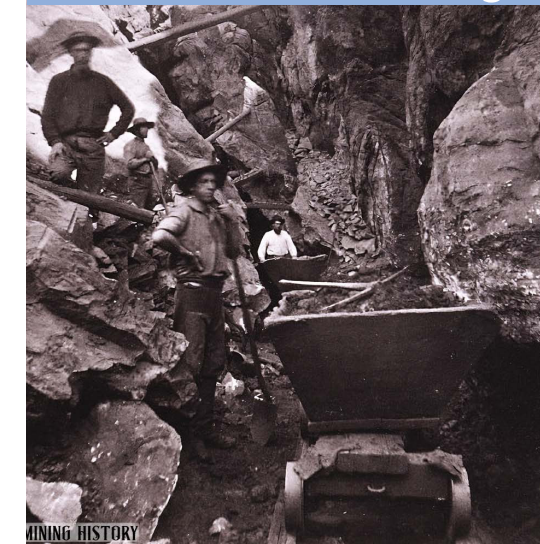
OPPORTUNITY #5

Highlight the diversity of communities that have shaped Tuolumne County throughout its history.

Central Sierra Me-Wuk Tribe: Shadow of the Miwok Trail



Ironwork and Tools Used in Placer Mining



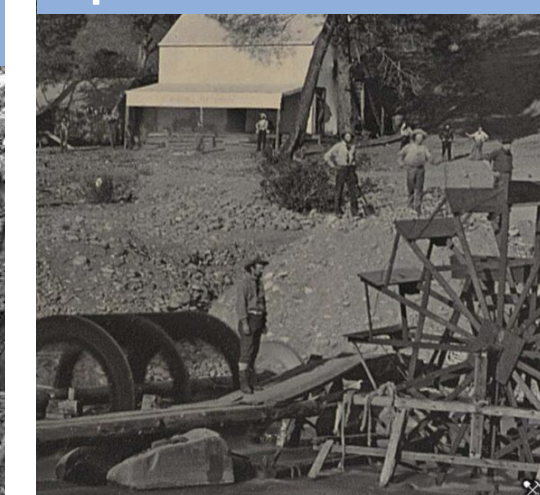
Parrotts Ferry Showcasing Importance of Transportation



Original Claims of Mexican Settlers "Sonoranians", Pre-1848



Waterwheel Used to Power Mining Operations

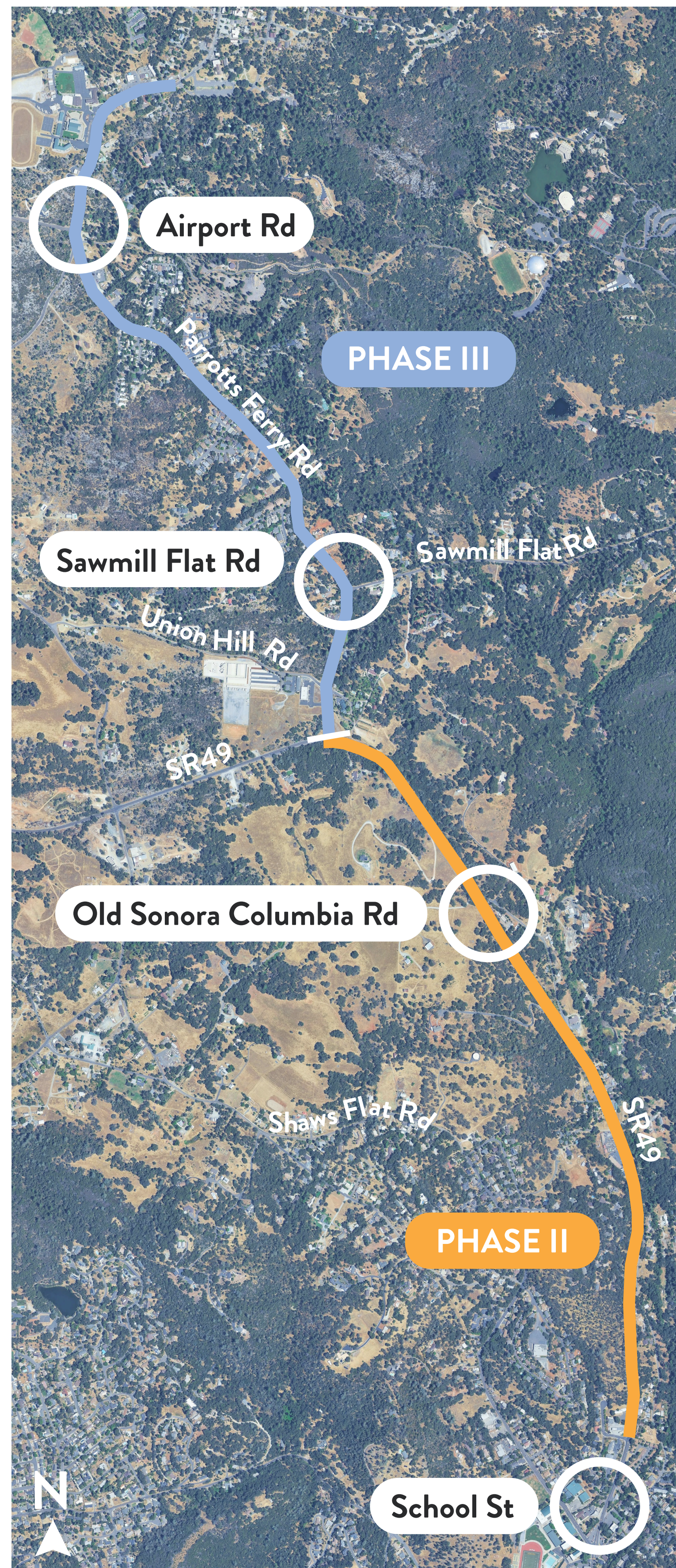


Columbia School (1903) and the Importance of Education

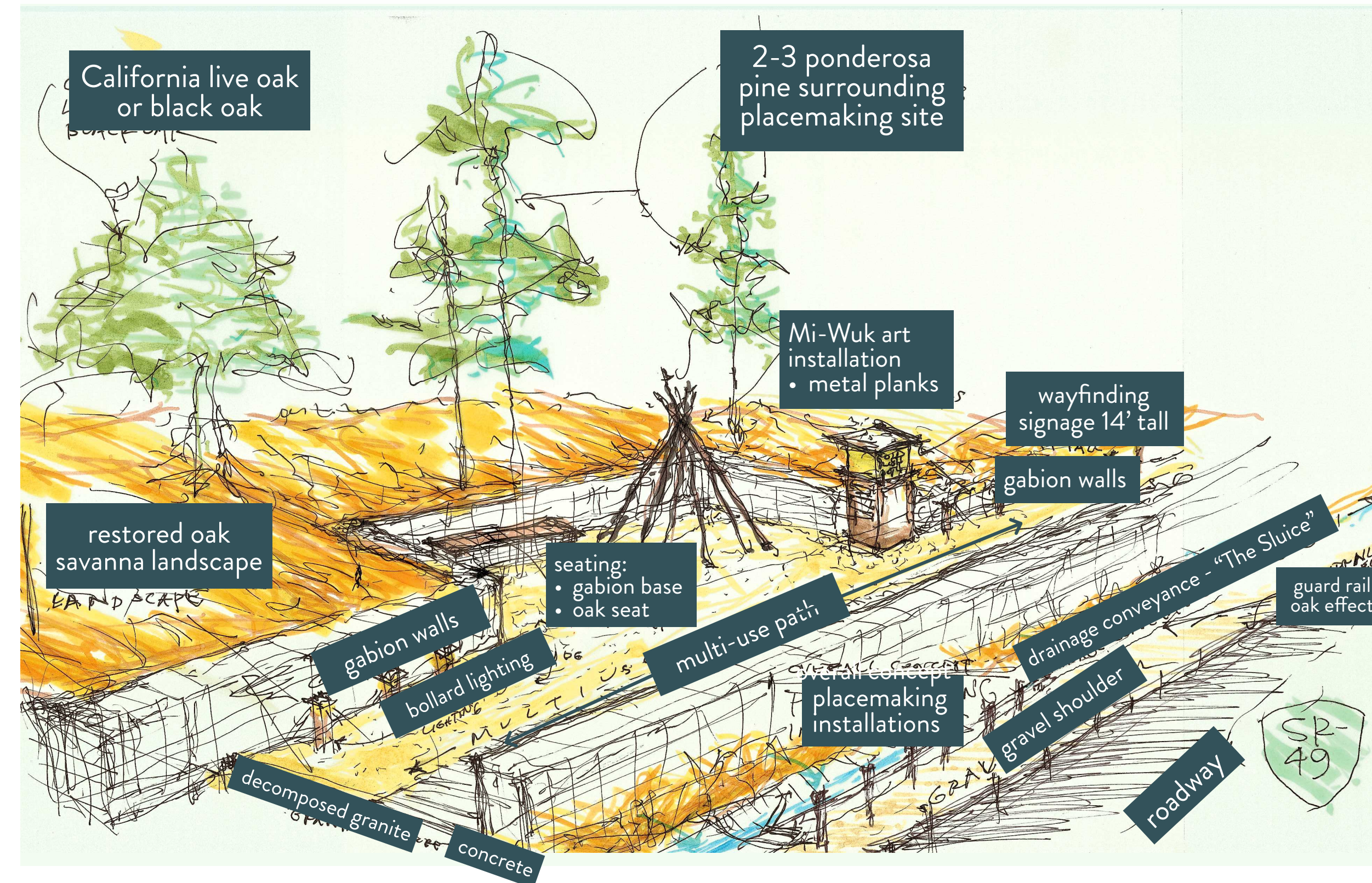




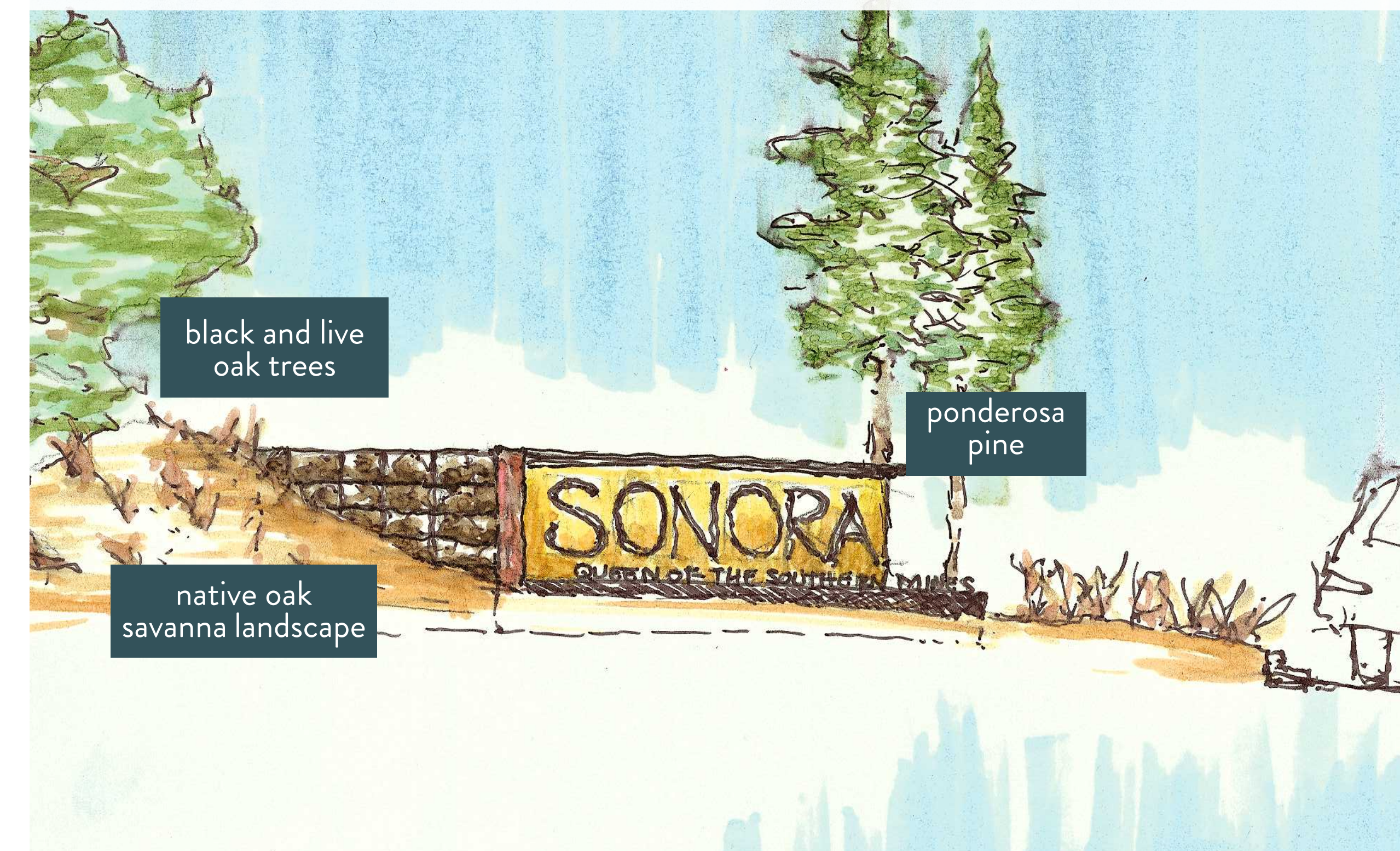
INITIAL CONCEPTS - PLACEMAKING



Placemaking Sketch



Interpretive Area/Gateway Signage
proposed roundabout at Sonora High School/SR-49



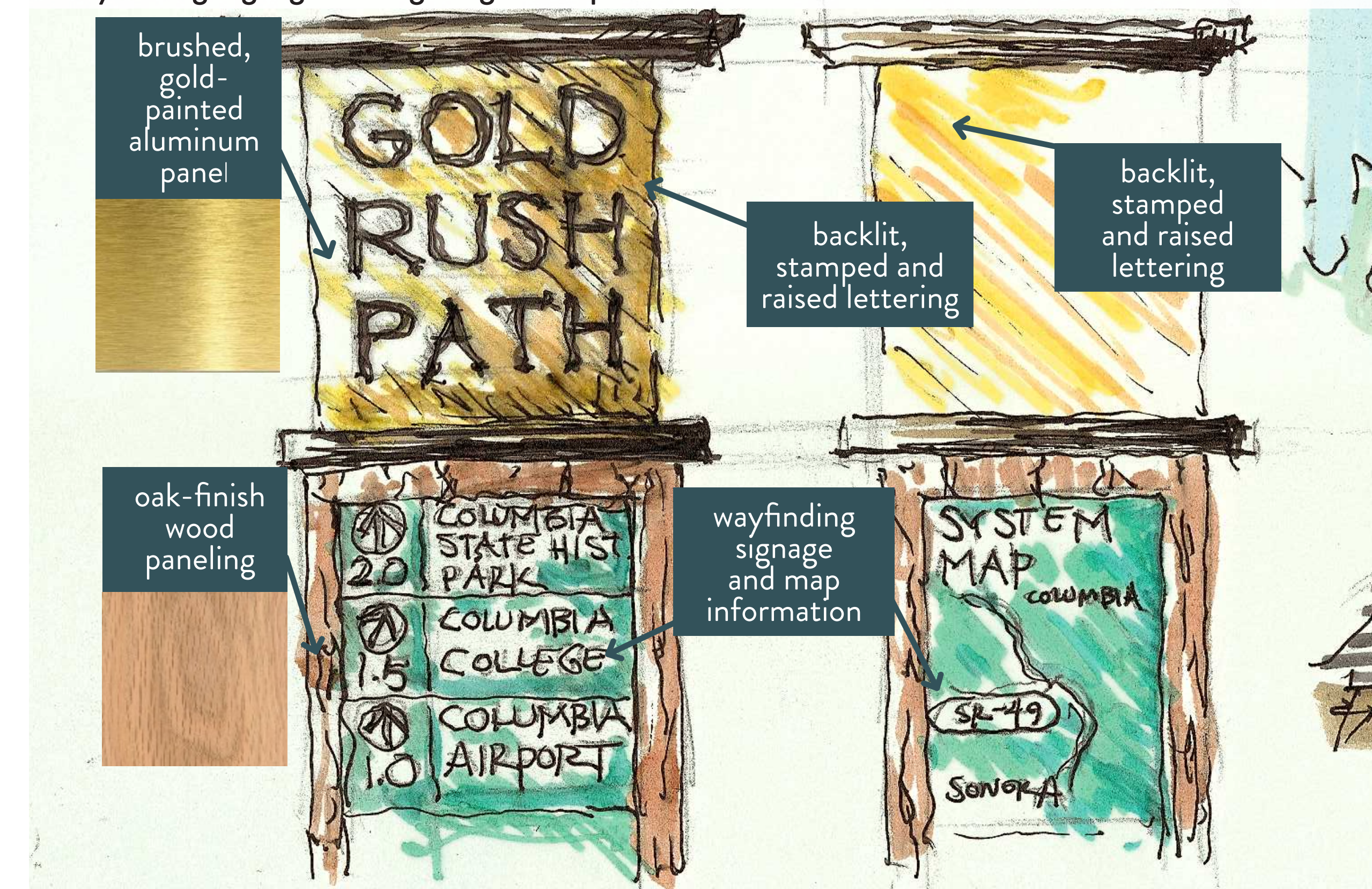
Public Art



Seating



Wayfinding Signage and Lighting Concept



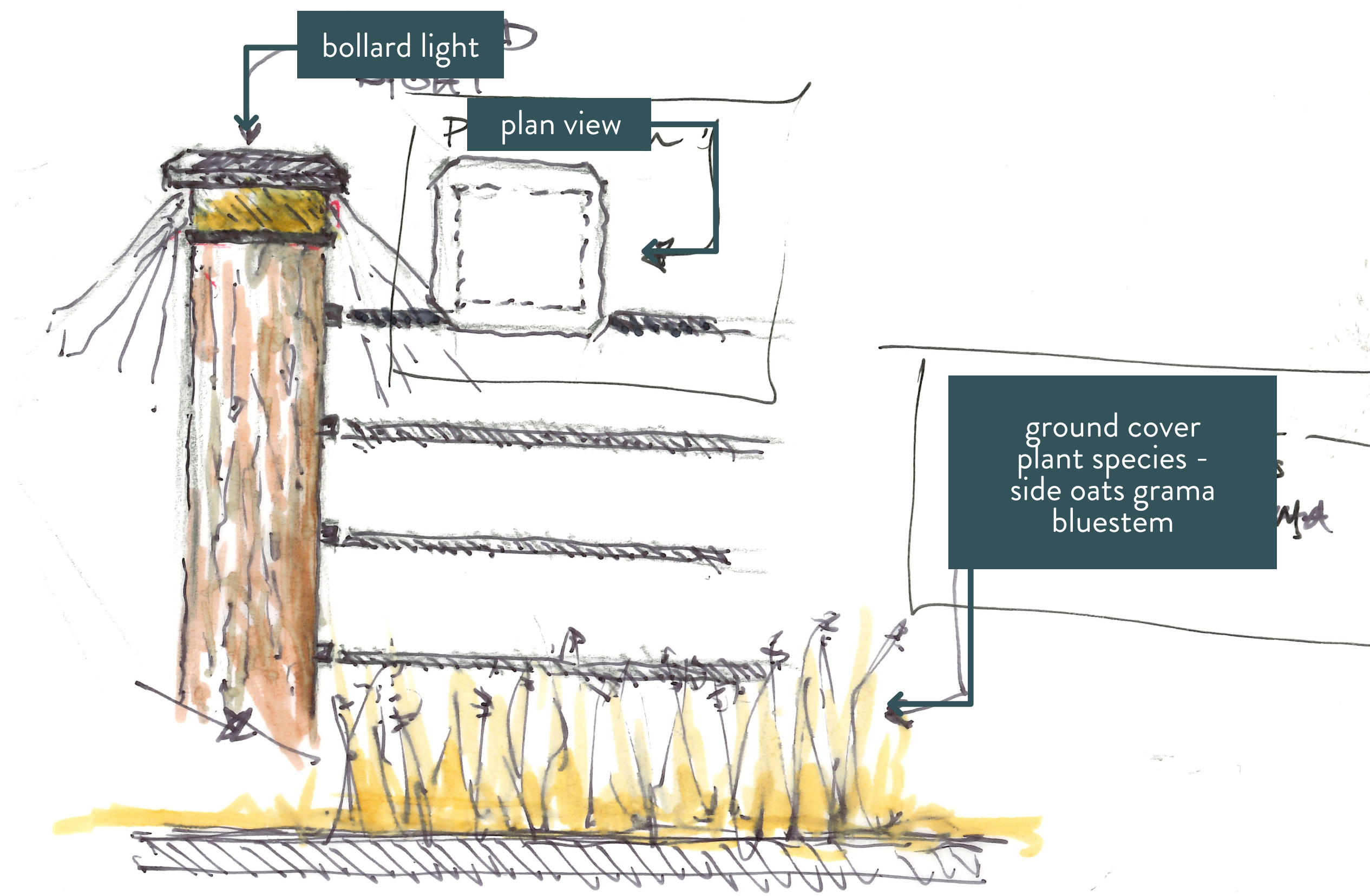


PLACEMAKING CONCEPTS - LIGHTING

Corridor-Wide Lighting



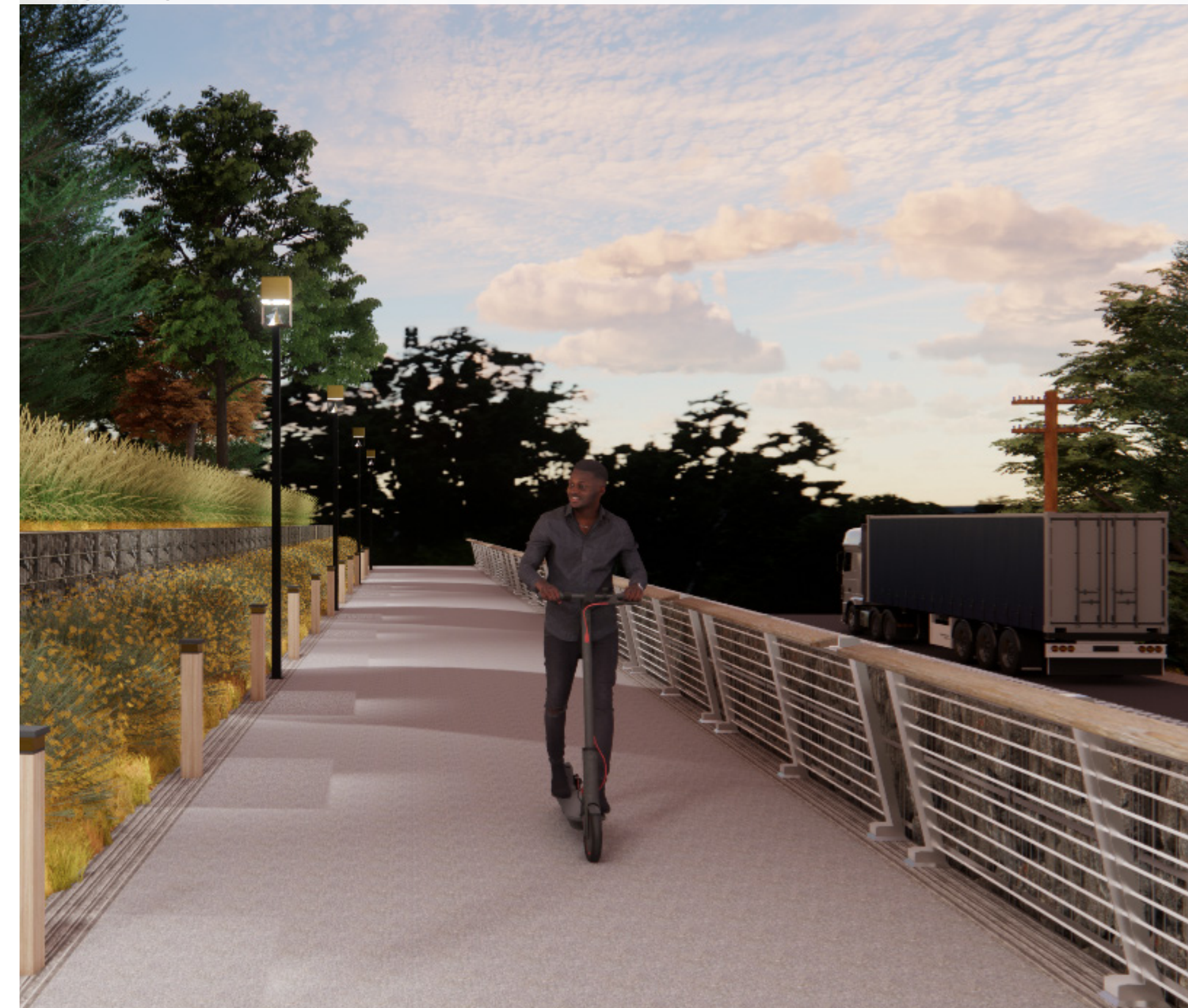
Bollard Lighting - Corridor Wide



Wayfinding Signage, Pedestrian Lighting, and Bollard Lighting



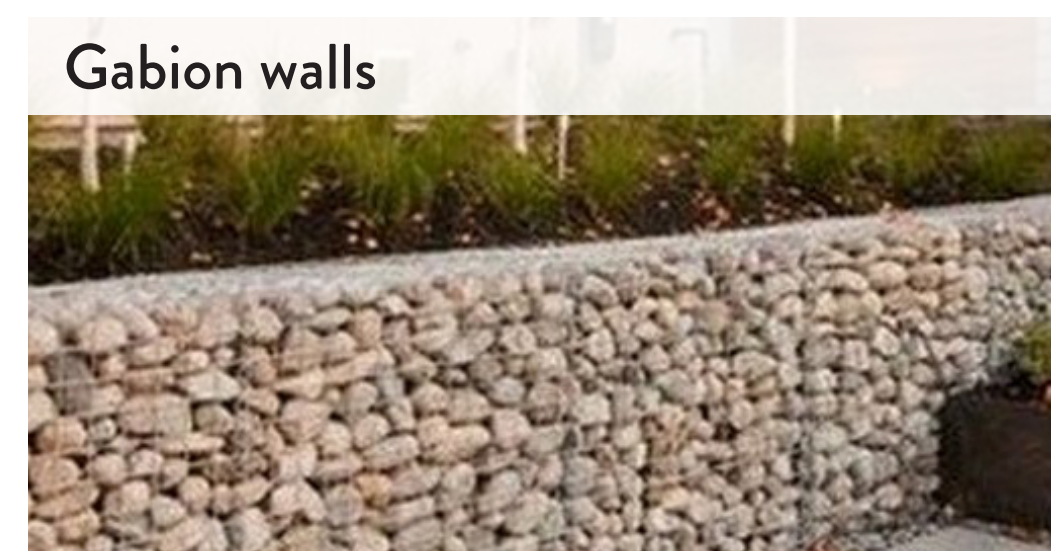
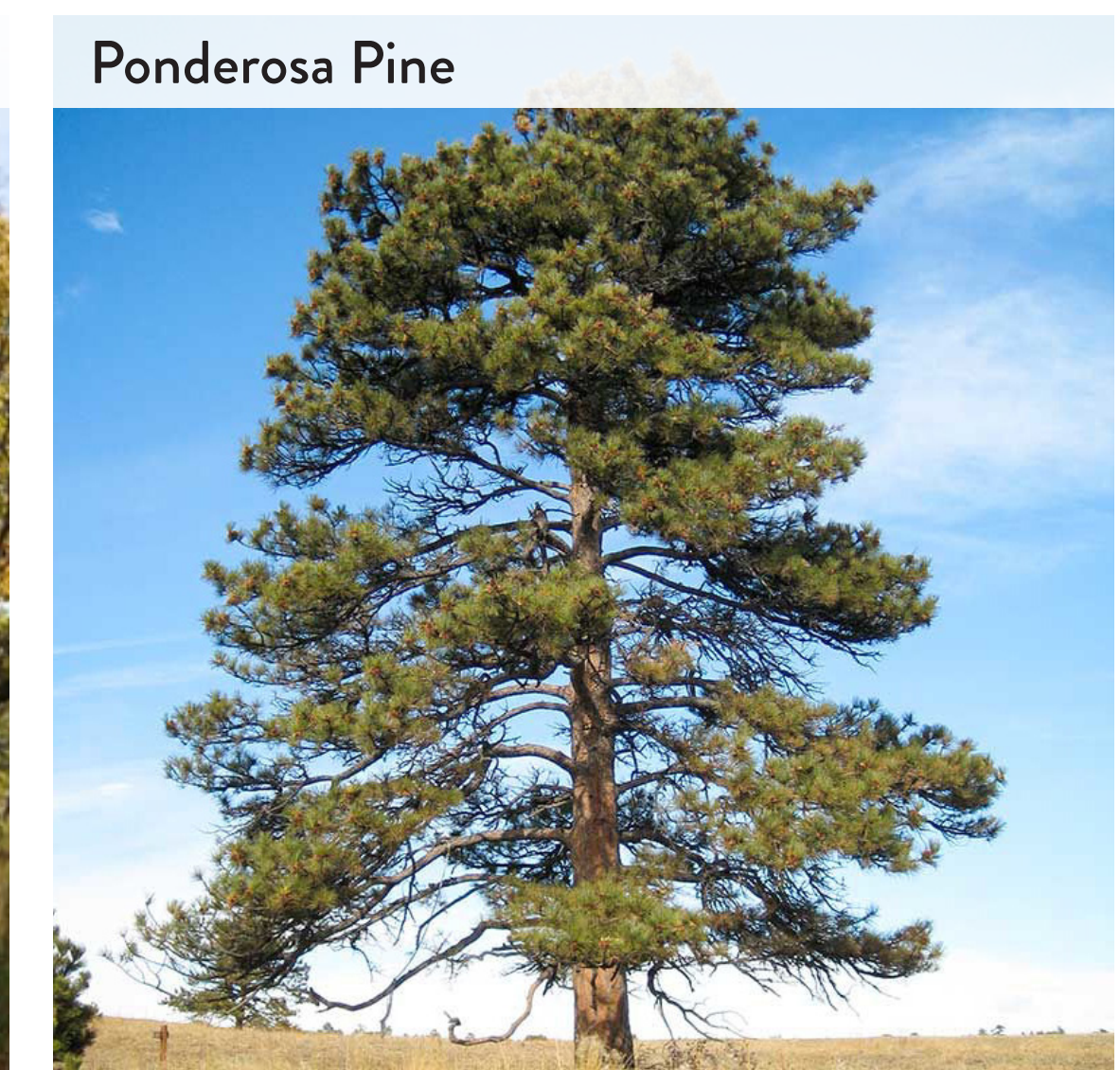
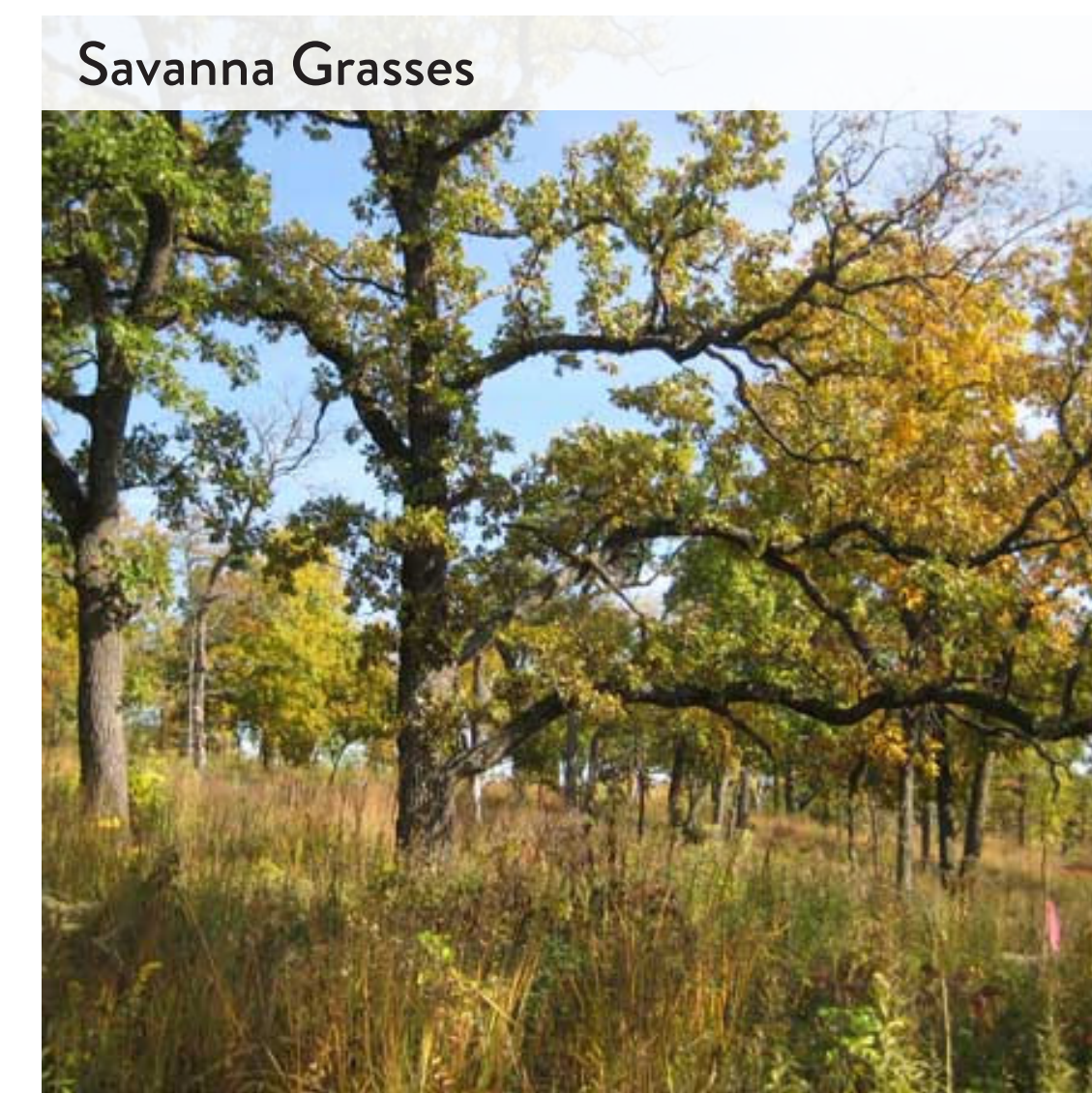
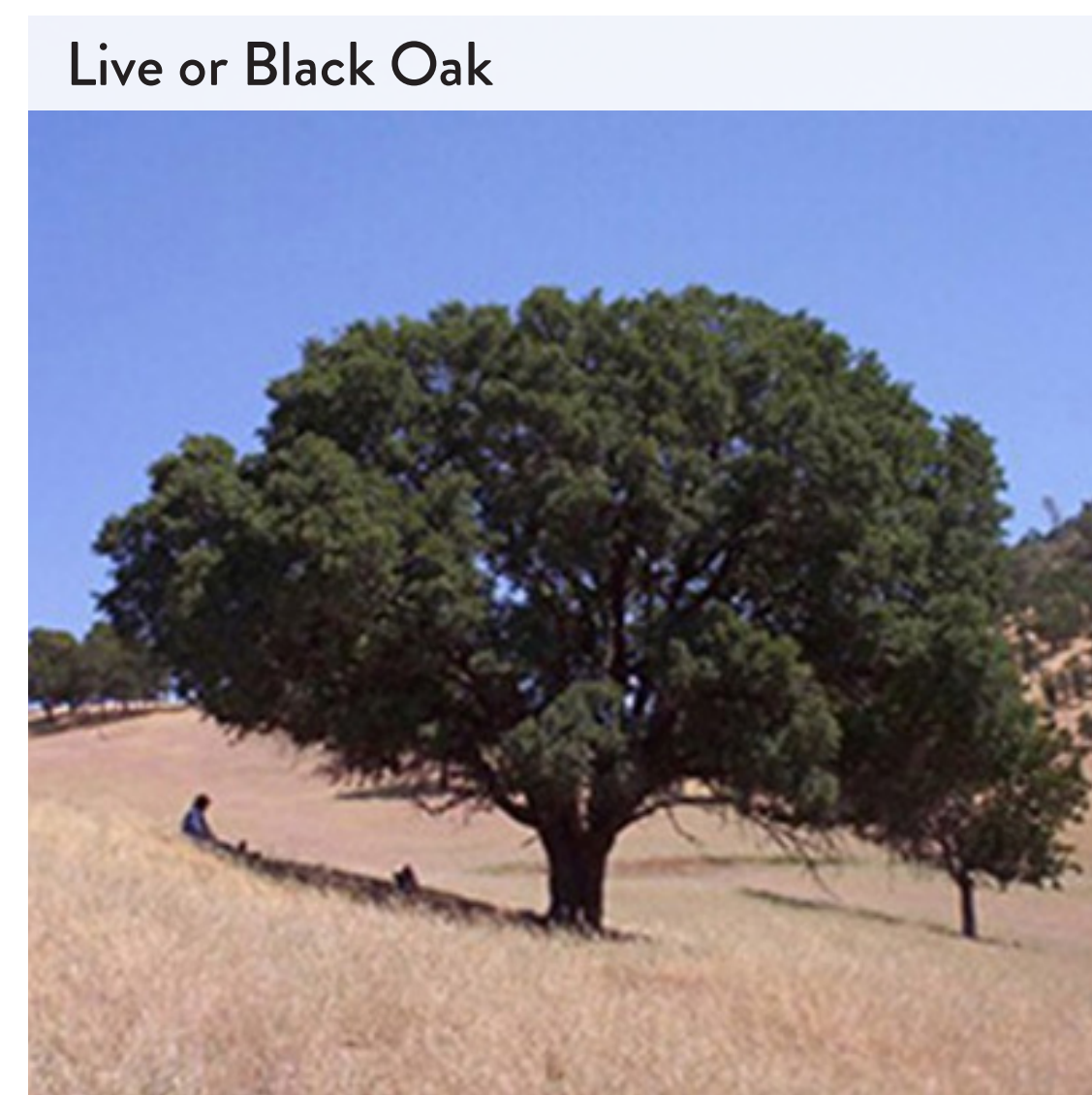
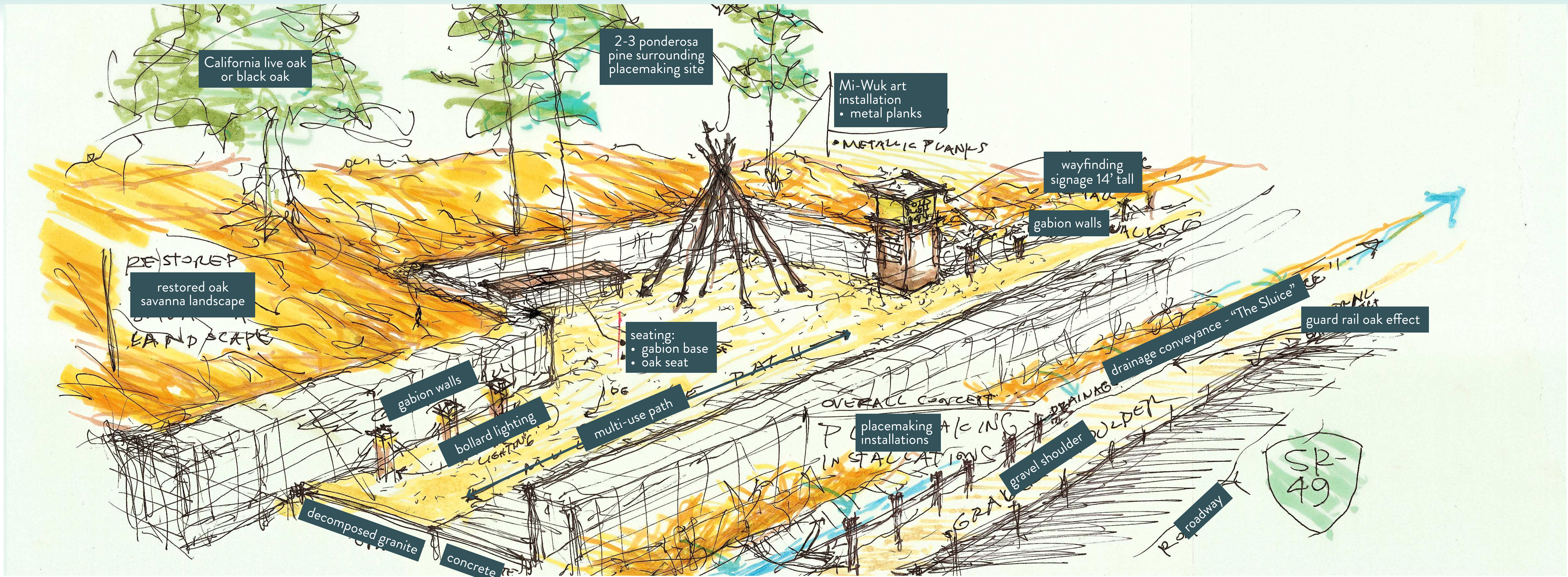
Lighting Concept



Wayfinding Signage and Lighting Concept



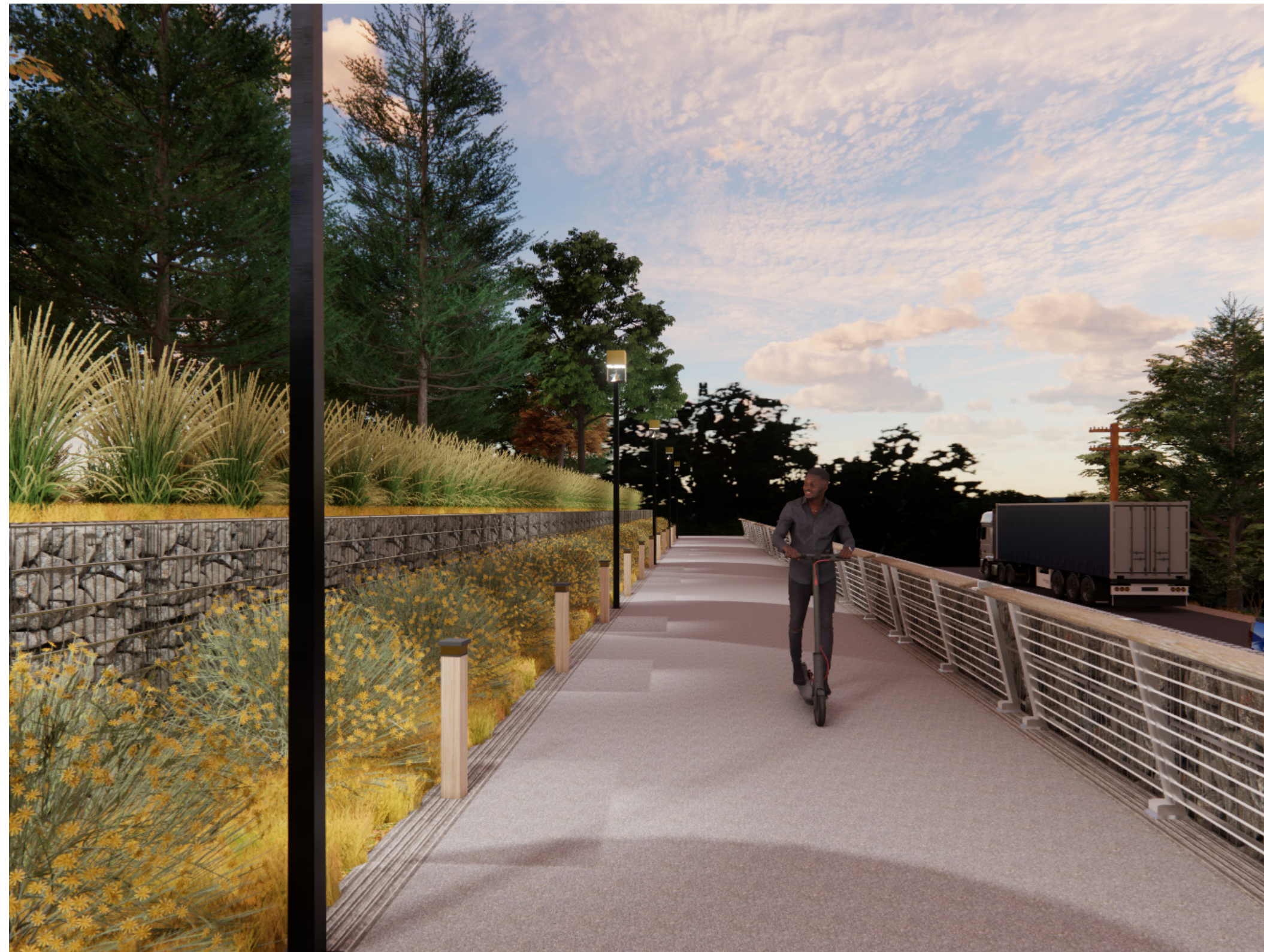
LANDSCAPE





CONCEPTUAL RENDERINGS

Explore the concepts
on your smartphone!



Gabion Walls with Boulders and Native Oak Savanna Plant Community



Corridor Wide Lighting and Mi-Wuk Art Installation



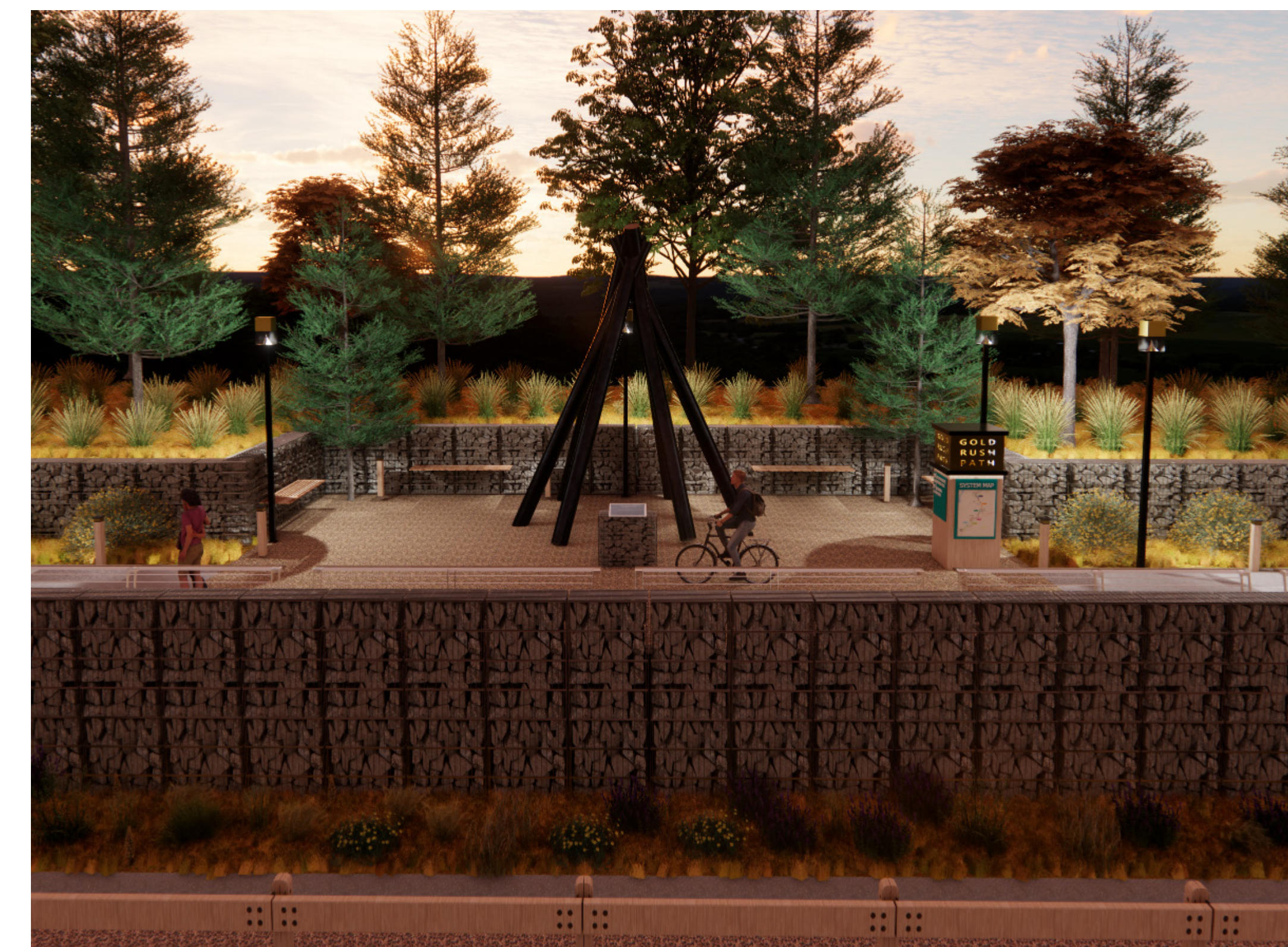
Wayfinding Signage and Mini Kiosk



New Shoulder on SR-49 and Natural Oak Effect Guard Rail



Birdseye View of Multi-Use Trail Concept



Elevation View of Placemaking Opportunity